



Model 9B Electric Switch Lock

Field-Proven Locking with Unmatched Longevity

The Model 9B Electric Switch Lock delivers proven performance and durability, offering a level of longevity in the field. Engineered for reliability, it contributes secure operation year after year in demanding rail environments.



KB SIGNALING™

Model 9B Electric Switch Lock

Key Benefits

Mainline Lock Application

- Direct locking of track points
- Available in two heights – Tall and Dwarf
- Door cannot be closed unless the switch is locked
- Banner type indicator displays locked or unlocked
- Four adjustable contacts, actuated by the operating handle
- Emergency release optional
- Door-operated circuit controller optional
- Sturdy, weatherproof construction

General Description

The Model 9B can minimize unauthorized operation of switch stands, hand-throw switch machines, derails and other devices. The unit may be electrically interlocked with the signaling system or remotely locked by the dispatcher, preventing switch operation unless traffic conditions permit. It operates by means of a plunger which is lowered into the lock rod connected to switch points, derails, or other devices.

The Model 9B is available in two heights: High and Dwarf stand. The unit's cast-iron base is bolted to the pedestal of a tall lock, or in the case of a short configuration, directly to the mechanism's case. The base has two compartments for the wires and locking plunger. A wire entrance plate or a junction box may be bolted to the wire compartment. A pressure grease fitting is provided for lubricating the locking plunger



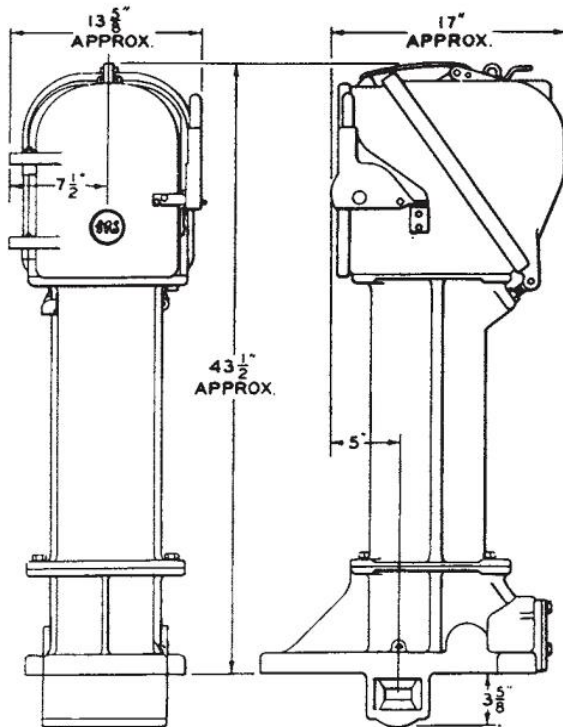
Model 9B Electric Switch Lock

Specifications

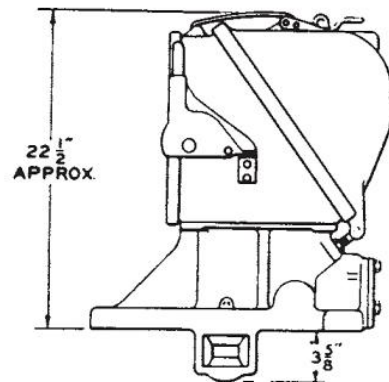
Voltage, operating	8 to 12 volts dc
Working current, maximum	31.5 ma.
Saturation current	64 ma.
Drop away current, minimum	2.85 ma.
Resistance, nominal	200 ohms

Ordering Information

Part Number	Description
21150-201-55	SW LCK 9B DWF EMER REL W/O DCC
21150-201-05	Switch Lock, Model 9B, High
21150-201-61	Switch Lock, Model 9B, High
21150-201-XX	Call for additional configurations



Two heights are available:
high and dwarf.



Contact your KB Signaling Business Development Manager
Call 1-800-825-7090, or Email us at aso.techsupport-kb@alstomgroup.com for more information today.

KB Signaling

2712 S. Dillingham Rd
Grain Valley, MO 64029
Phone: +1 800-825-7090
www.kb-signaling.com

-  **KNORR-BREMSE**

-  **NEW YORK AIR BRAKE**

-  **IFE**

-  **MERAK**

-  **MICROELETTRICA**

-  **SELECTRON**

-  **EVAC**

-  **KB SIGNALING**

-  **ZELSKO**

-  **RAILSERVICES**